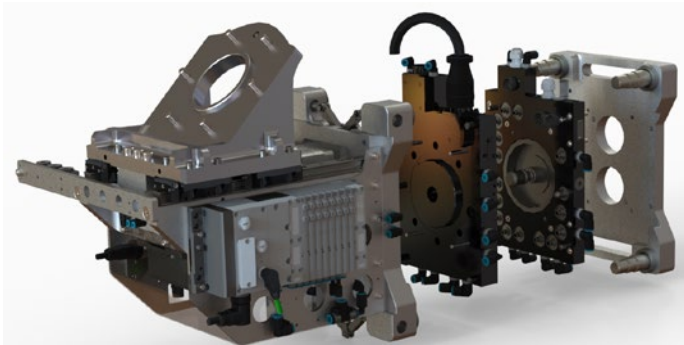




## sar@GripperUpgrade

The retrofit kit has been designed specifically for existing Stäubli MPS 125/130 grippers and adapter applications in order to meet the safety requirements of the increased torques of the new ABB 6650 and KUKA Quantec robot generations.



### Condition

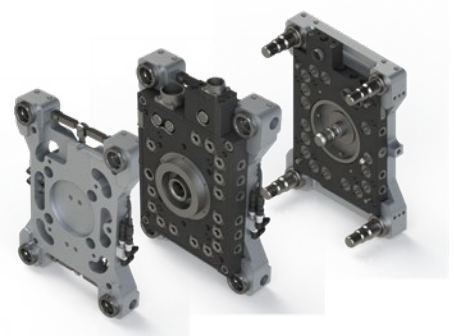
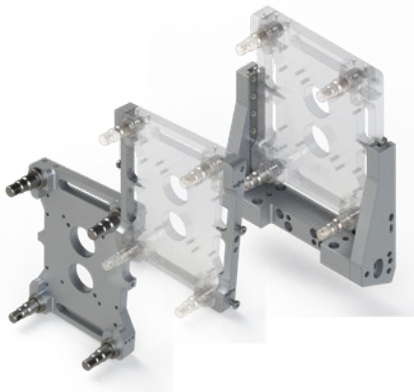
- MPS 125 or MPS 130 Stäubli adapter plates

### Connectivity

- Easy mechanical conversion on the gripper and robot side
- Pneumatic connection for the interlock

### SAR scope of delivery

- Adapter plate for robot side of MPS 125/130
- Adapter plate for gripper side of MPS 125/130
- Optional: Tray module



### Advantages

- Same performance features of a Stäubli MPS 260, but even more compact, and no change of the connection plate necessary
- Low weight
- Easy assembly
- No additional valves required
- Maximum level of safety
- Total costs are lower than for completely new coupling.
- Minor changes to the robot programme (shifting TCP only on the Z-axis)

### SAR Elektronik GmbH

Richard-Stücklen-Straße 15  
91710 **Gunzenhausen**  
Tel.: +49 9831 8811-0

**kss@sar.biz**