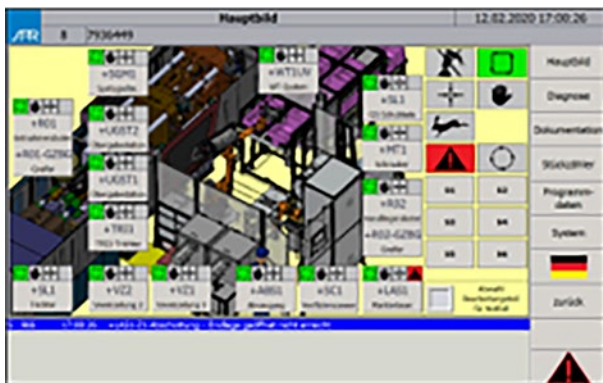




# sar@OEE max

The sar@rapid fault detection is the perfect tool for easy error analysis in automation systems and thus for the optimisation of OEE indicators due to short downtimes. Special attention was paid to the plant operator who will be able to identify the state of the automation system by means of images, symbols and plain text - even with a common level of knowledge - and thus draw the right conclusions with regard to troubleshooting. Furthermore, the maintenance personnel benefit from the fact that current errors can be analysed through selection down to the component level. Together with the online documentation, these analyses can then be used for potential orders. Error histories are recorded and allow for an overall picture of the preventative maintenance to be planned.

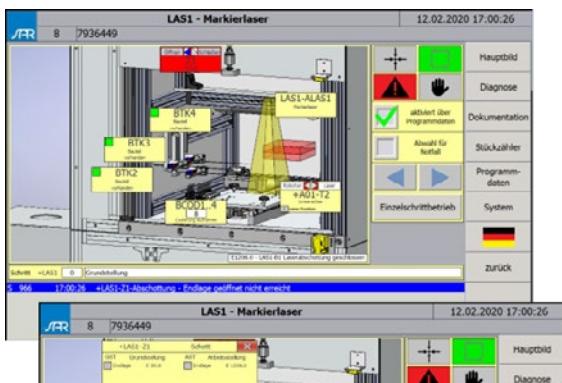
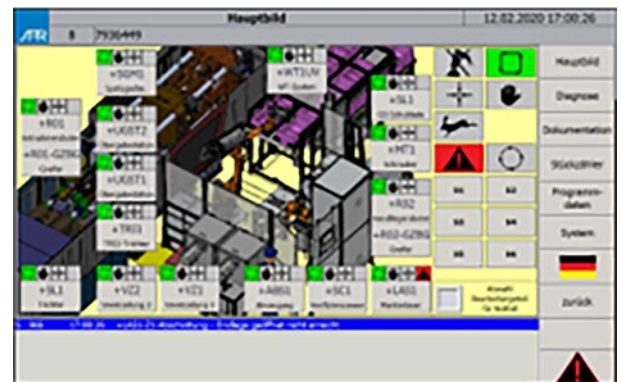


- Error detection made easy; the time for troubleshooting by operators or specialists is cut by up to 30 %. This ensures maximum system availability
- Supported by images and plain text, the intuitive operator guidance provides transparency in every detail.
- The fault archive and the automatically updated display provide preventative maintenance as opposed to action driven by rush.
- All documentations, from the operating manual to the spare parts catalogue, provide quick and easy online access for operators and qualified staff.

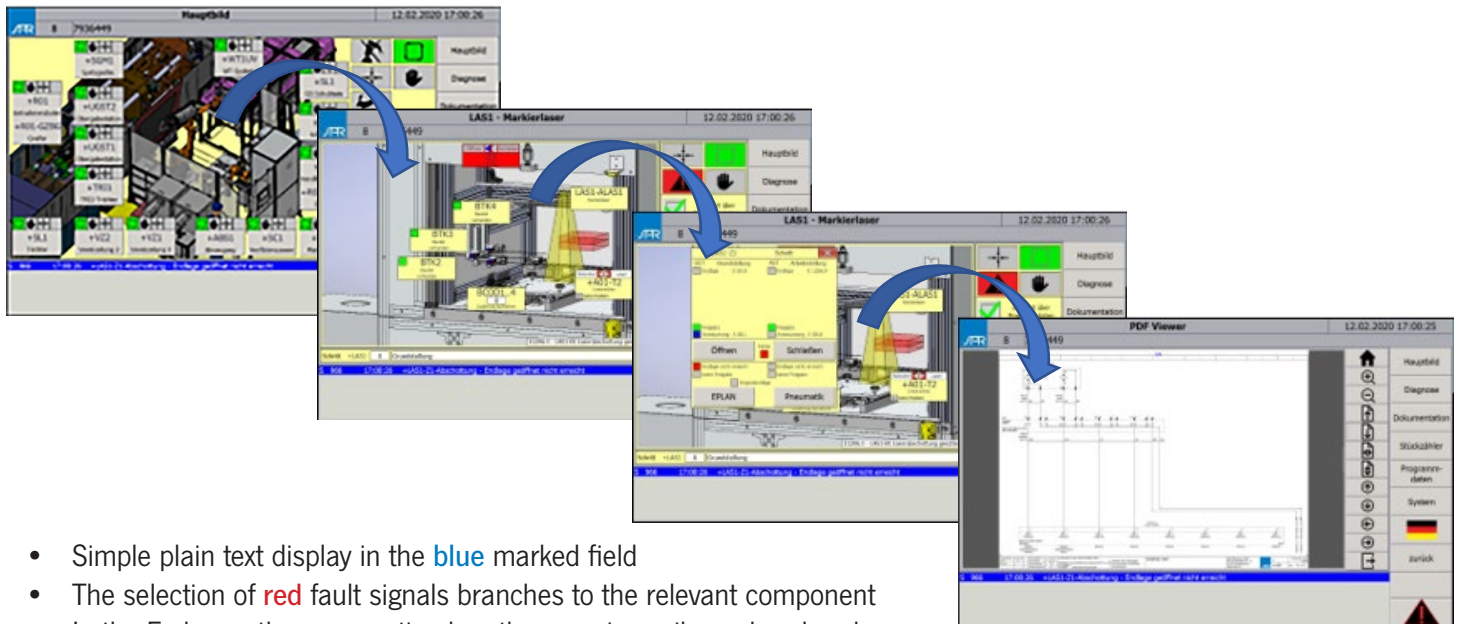
- Easy to handle
- Maximum transparency
- Self expandable
- Troubleshooting time reduced by 30 %
- Images + plain text
- Online documentation
- Error archive

### PLC requirements:

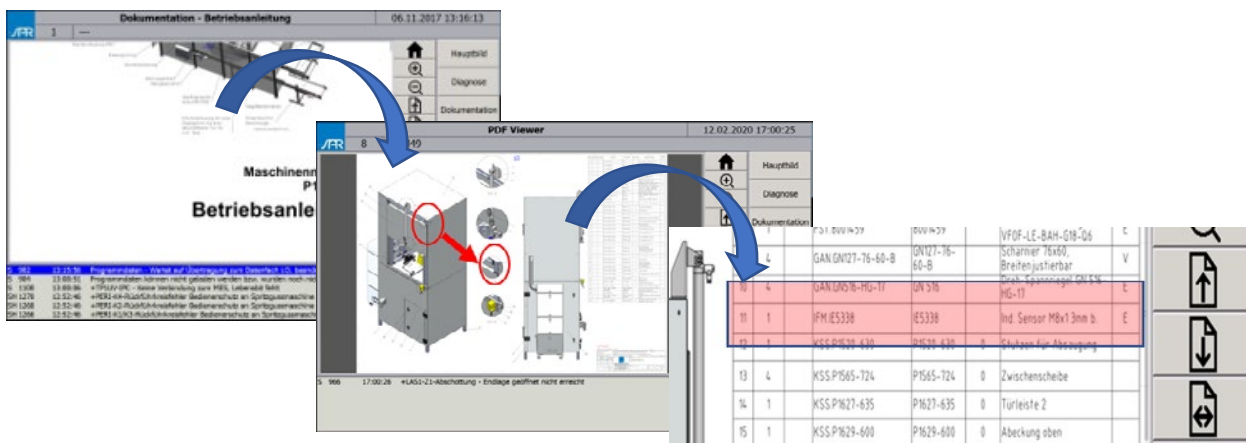
- PLC Siemens CPU 1512F or
- PLC Siemens CPU 1515F



- The main screen is the central information platform and displays the overall system
- The states of individual assemblies are shown in colour
- Pieces counter, programme data and faults can be called up via an integrated MES light system.
- The fault archive is saved within the diagnostics area



- Simple plain text display in the blue marked field
- The selection of red fault signals branches to the relevant component
- In the E-plan or the pneumatic plan, the error is easily analyzed and quickly corrected



- All information on the 24/7 automation system are available as a .pdf file in the online operating instructions.
- The assembly drawings as well as the article numbers for spare and wear parts are selectable
- The components with the correct part numbers can be easily entered from the warehouse

**SAR Elektronik GmbH**

Richard-Stücklen-Straße 15

91710 Gunzenhausen

Tel.: +49 9831 8811-0

kss@sar.biz