



# IRMA®

## CYBERSECURITY IN THE INDUSTRY

Protect your production facilities



## CYBERATTACKS ON THE RISE – HOW SECURE IS YOUR SYSTEM?

Networked systems in industry offer great advantages, but also new points of attack for cyber criminals.

Ransomware, malware and targeted sabotage threaten production processes and sensitive company data. A single attack can lead to considerable downtime, financial damage and loss of image.

**IRMA® is your solution!**

## IRMA® – YOUR PROTECTIVE SHIELD AGAINST CYBER ATTACKS

IRMA® (Industrial Risk Management Automation) was specially developed for the control, automation and information technology of production plants.

IRMA® allows you to monitor your network in real time, detect anomalies immediately and minimize risks efficiently.



## YOUR BENEFITS WITH IRMA®

- **Real-time threat detection**  
Immediate identification of attacks and vulnerabilities
- **Automated asset capture**  
Overview of all connected systems
- **Continuous vulnerability management**  
Transparency about cyber risks
- **Legally compliant**  
Support for KRITIS, DORA, NIS2 and IT-SIG 2.0
- **Easy implementation**  
Minimum effort, maximum security

## WHY IRMA®?

- Specially developed for industry  
Suitable for production facilities of any size
- Maximum transparency with minimum effort  
No complex set-up required
- Prevention instead of reaction  
Detect and prevent attacks before they cause damage

Protect your production with IRMA® - the intelligent cybersecurity solution for your industrial facilities!

## HOW IRMA® WORKS



**Analyze**

Automatic identification of all networked assets



**Manage**

Classification and grouping for a better overview



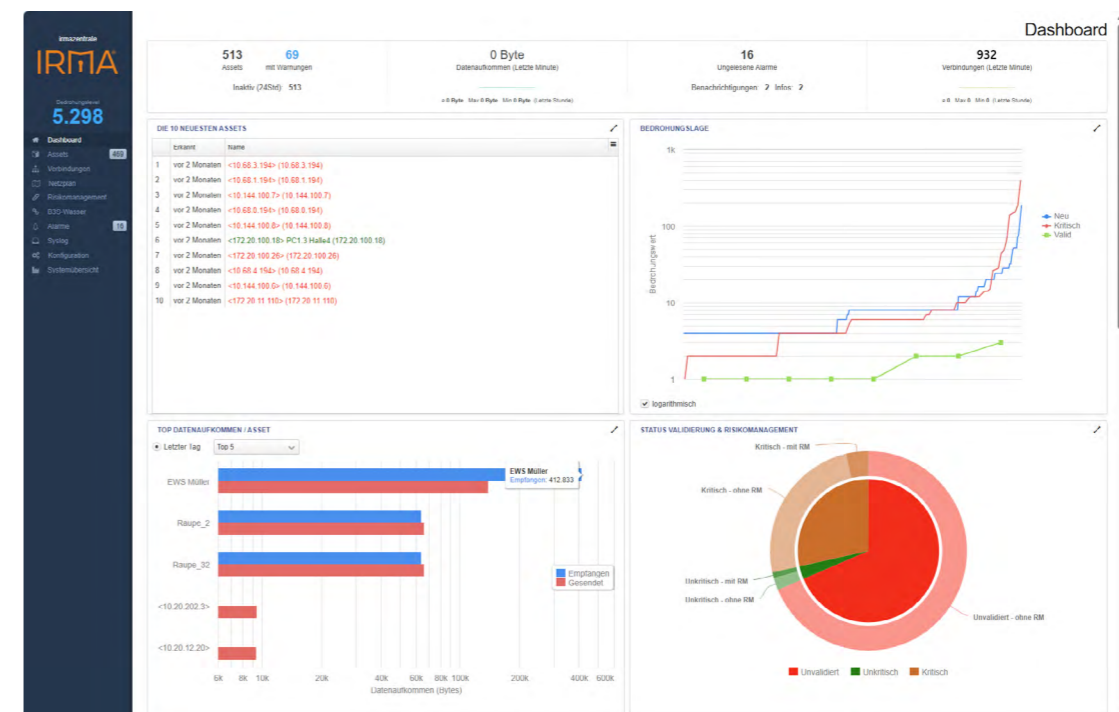
**Evaluate**

Threat detection and risk assessment in real time



**Visualize**

Clear IT dashboards with alerting system





**SAR Electronic GmbH**  
**Gobener Weg 31**  
**84130 Dingolfing**  
**Germany**

**[its@sar.biz](mailto:its@sar.biz)**  
**[www.sar.biz](http://www.sar.biz)**